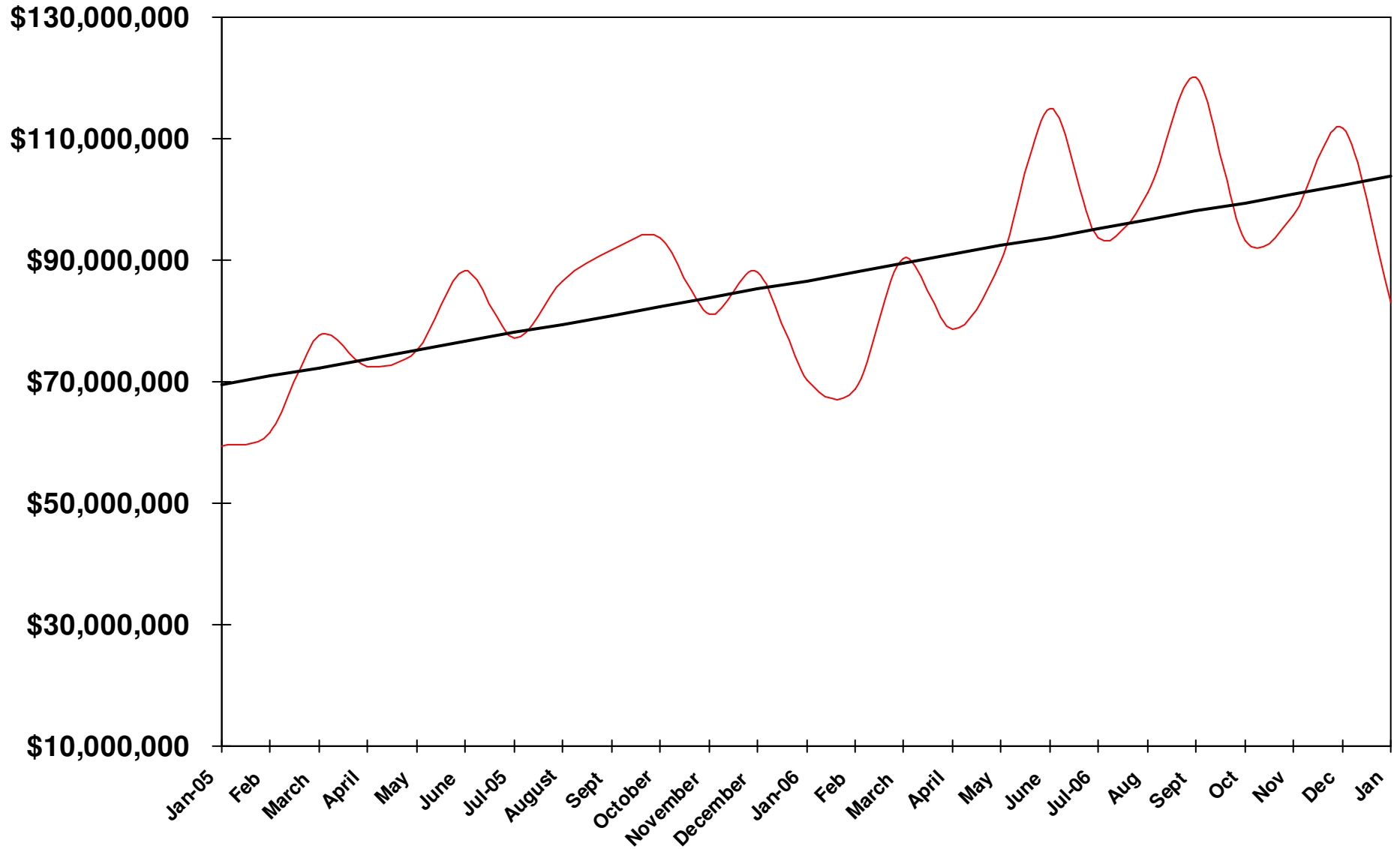


Elko County Taxable Sales

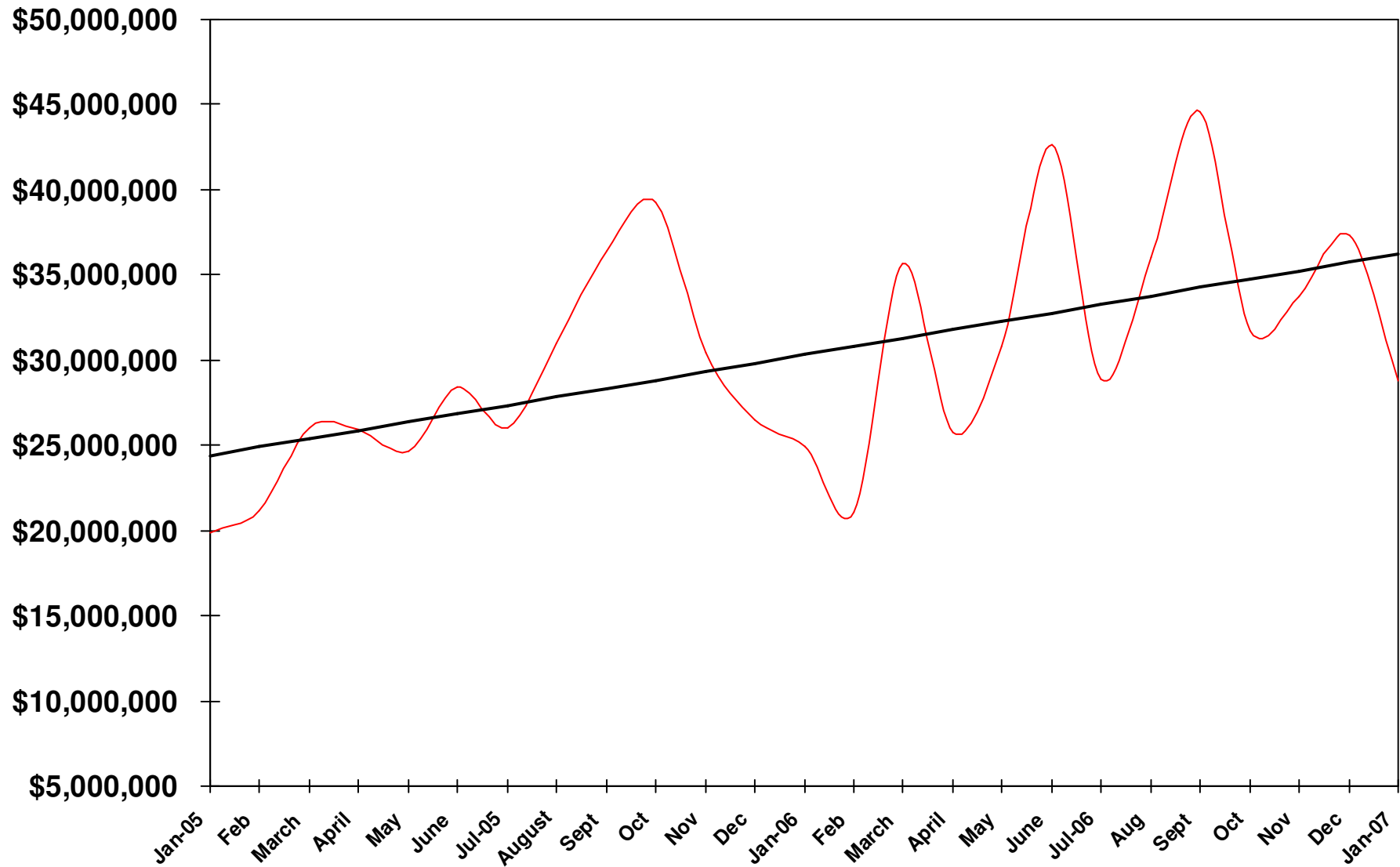
Category	January, 2006	January, 2007	% of Total	% Change	\$ Change	% Change Last Month
Mining	1,451,898	1,781,012	2%	23%	329,114	-28%
Construction	1,645,192	2,052,173	2%	25%	406,981	-69%
Chemicals	1,091,413	2,000,484	2%	83%	909,071	6%
Industrial Machinery	3,888,468	3,706,938	4%	-5%	(181,530)	-56%
Transportation/Comm/Utilities	554,425	892,004	1%	61%	337,579	-9%
Wholesale Trade	16,286,186	18,325,054	22%	13%	2,038,868	8%
Building Materials / Hardware	3,741,144	3,976,450	5%	6%	235,306	5%
Retail	13,718,735	20,171,340	24%	47%	6,452,605	-35%
Automotive / gasoline	8,422,774	11,282,183	14%	34%	2,859,409	-20%
Home Furniture & Furnishings	1,819,514	1,986,842	2%	9%	167,328	-12%
Eating and Drinking Places	5,498,059	4,481,170	5%	-18%	(1,016,889)	-18%
Business Services	2,678,255	4,194,479	5%	57%	1,516,224	-43%
Repair Services	3,990,620	1,145,634	1%	-71%	(2,844,986)	-26%
Amusement / Recreation	3,916,469	3,675,514	4%	-6%	(240,955)	-33%
Miscellaneous Other	1,660,405	3,408,280	4%	105%	1,747,875	-4%
Total	70,363,557	83,079,557	100%	18.1%	12,716,000	-26%

Taxable Sales - Elko County



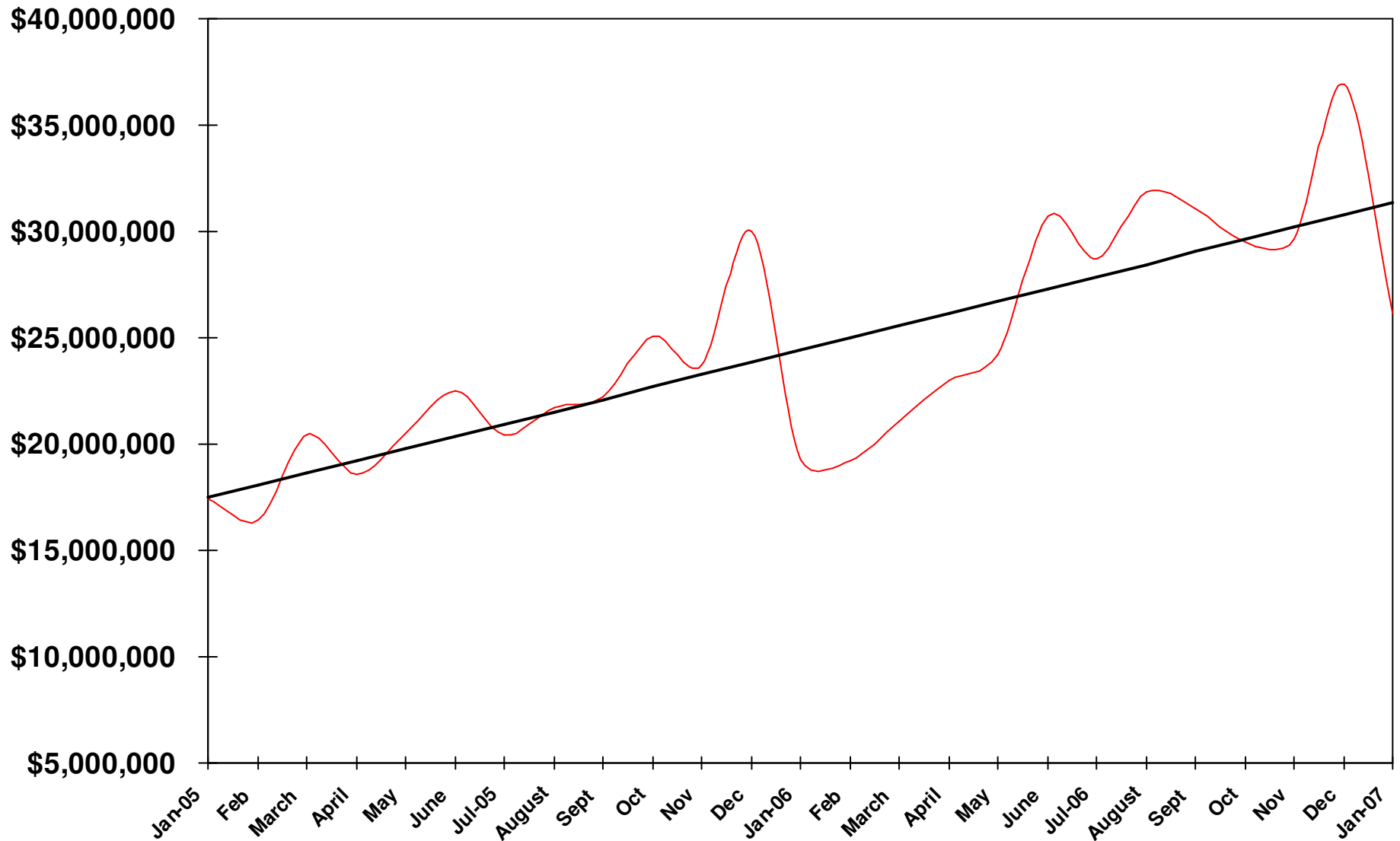
Taxable Sales - Industrial / Business

YTD – 35% of Total



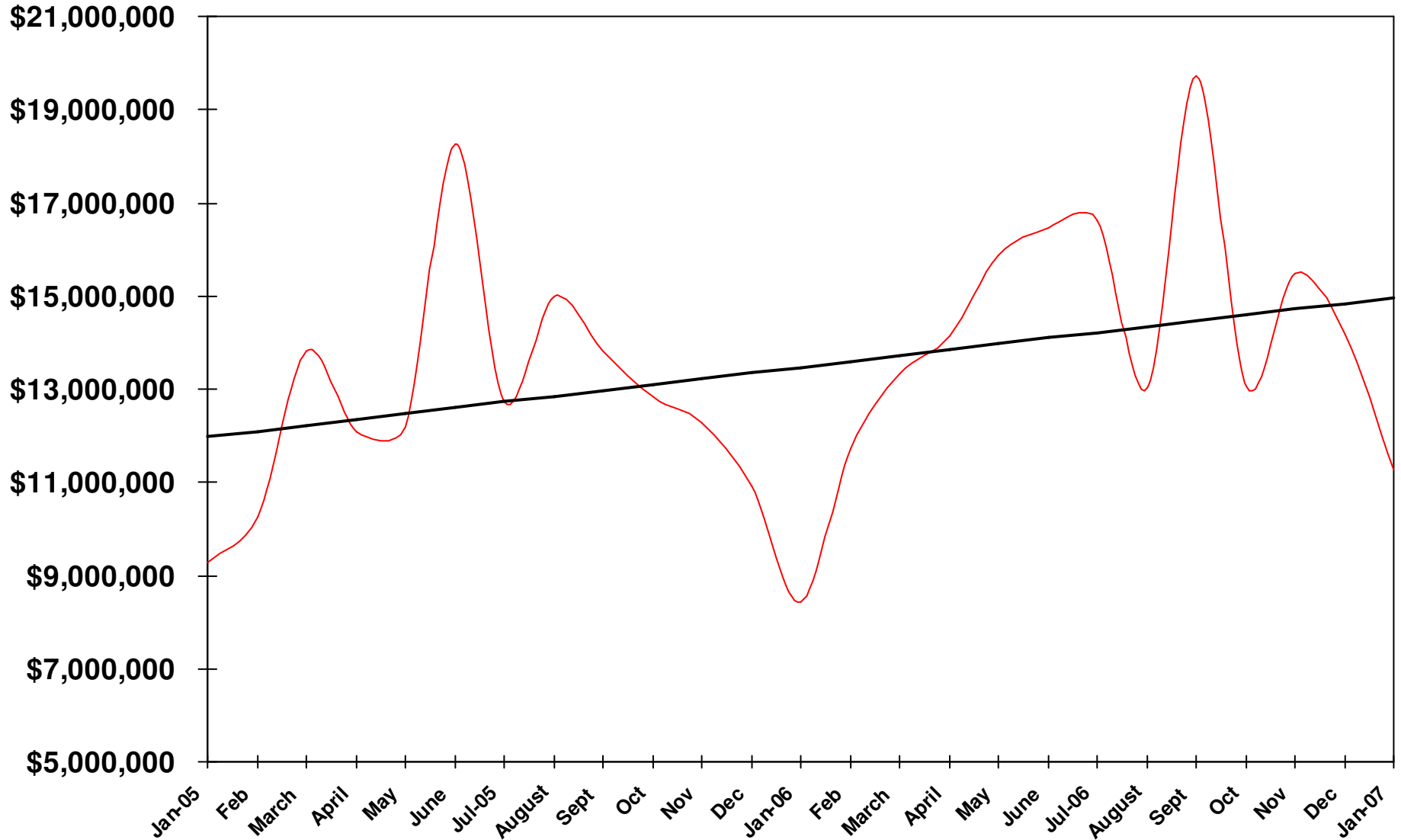
Taxable Sales - Retail

YTD - 31% of Total



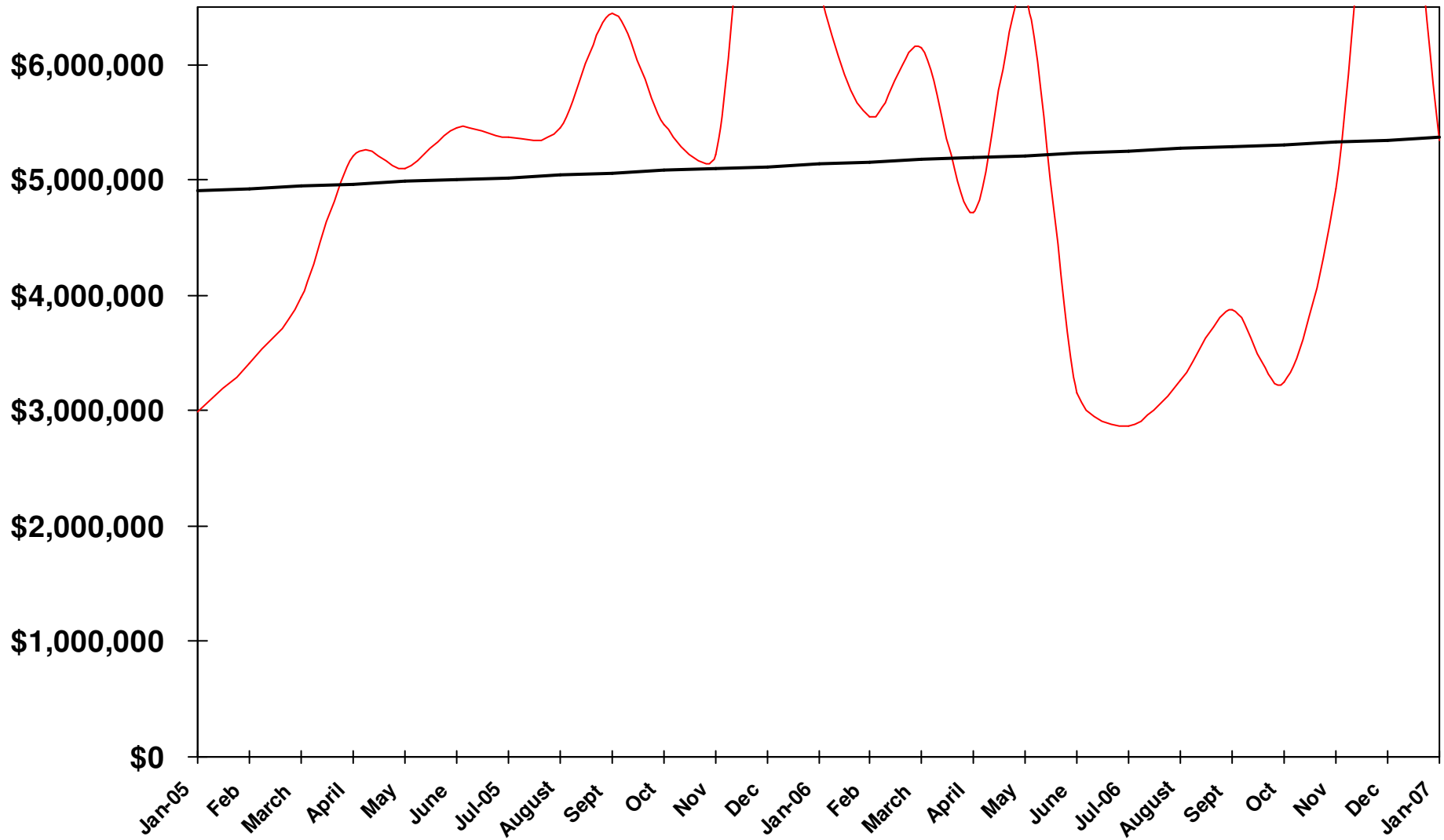
Taxable Sales - Auto Related

YTD - 14% of Total



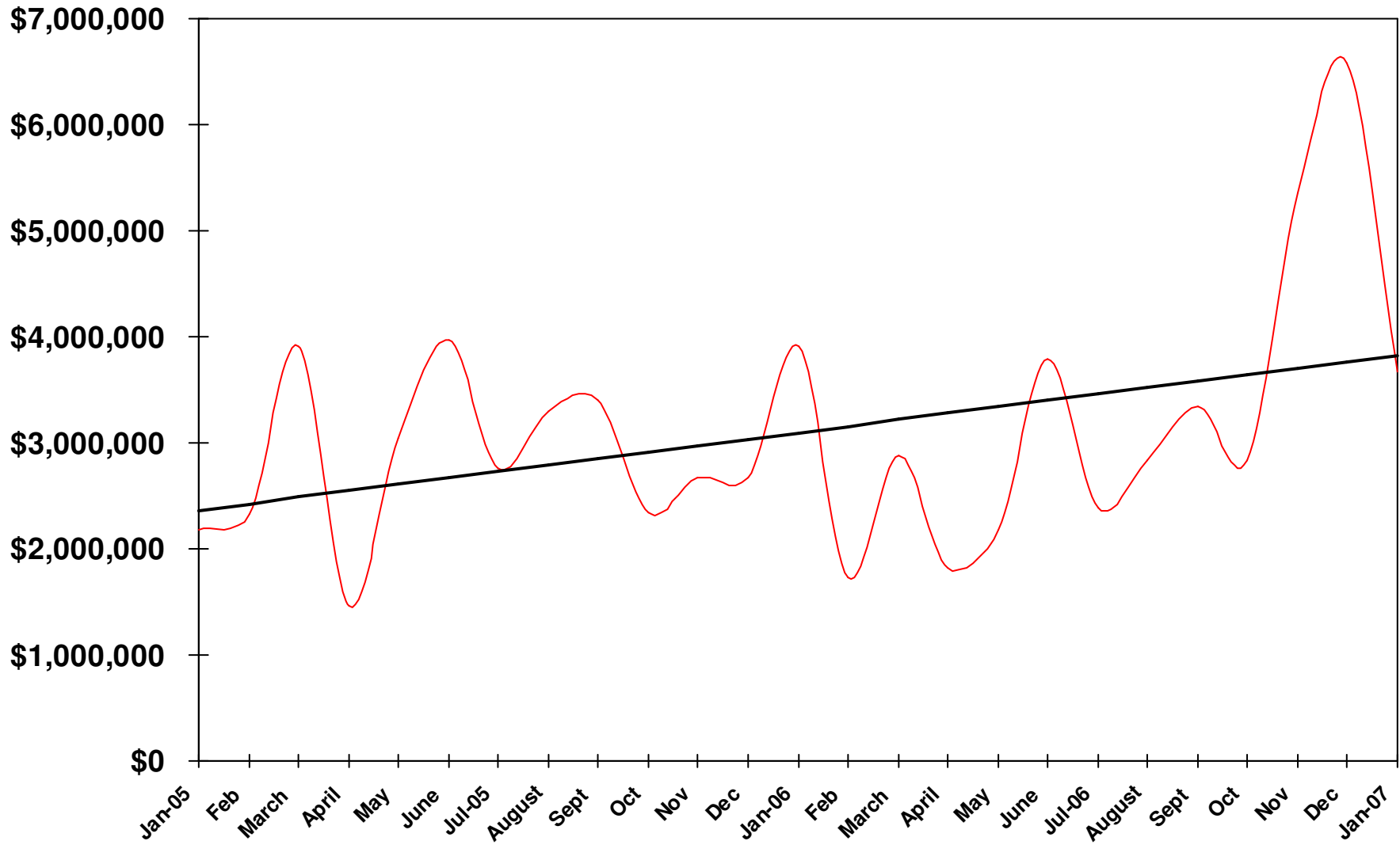
Taxable Sales -Services

YTD - 6% of Total



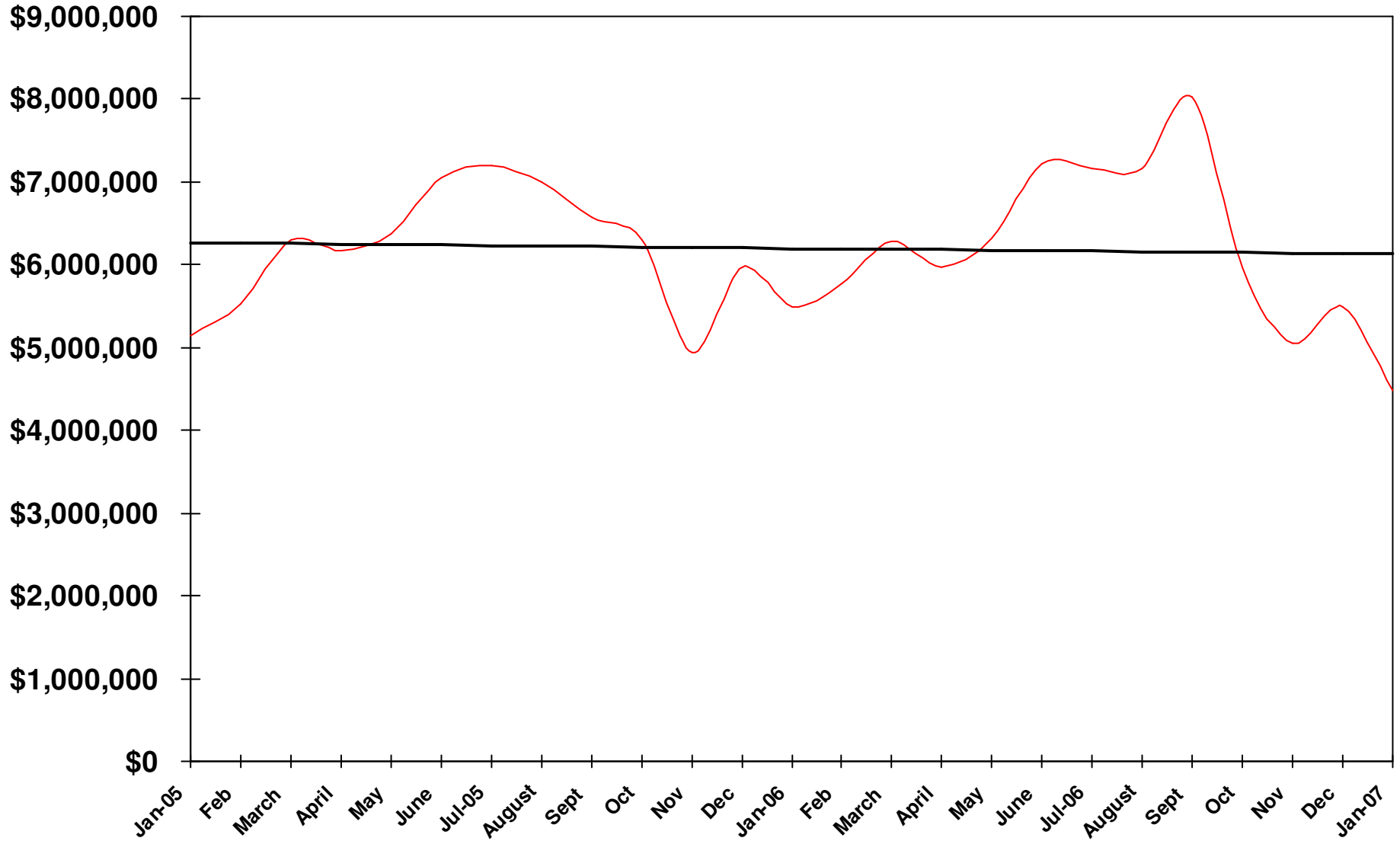
Taxable Sales -Recreation Equipment

YTD – 4% of Total

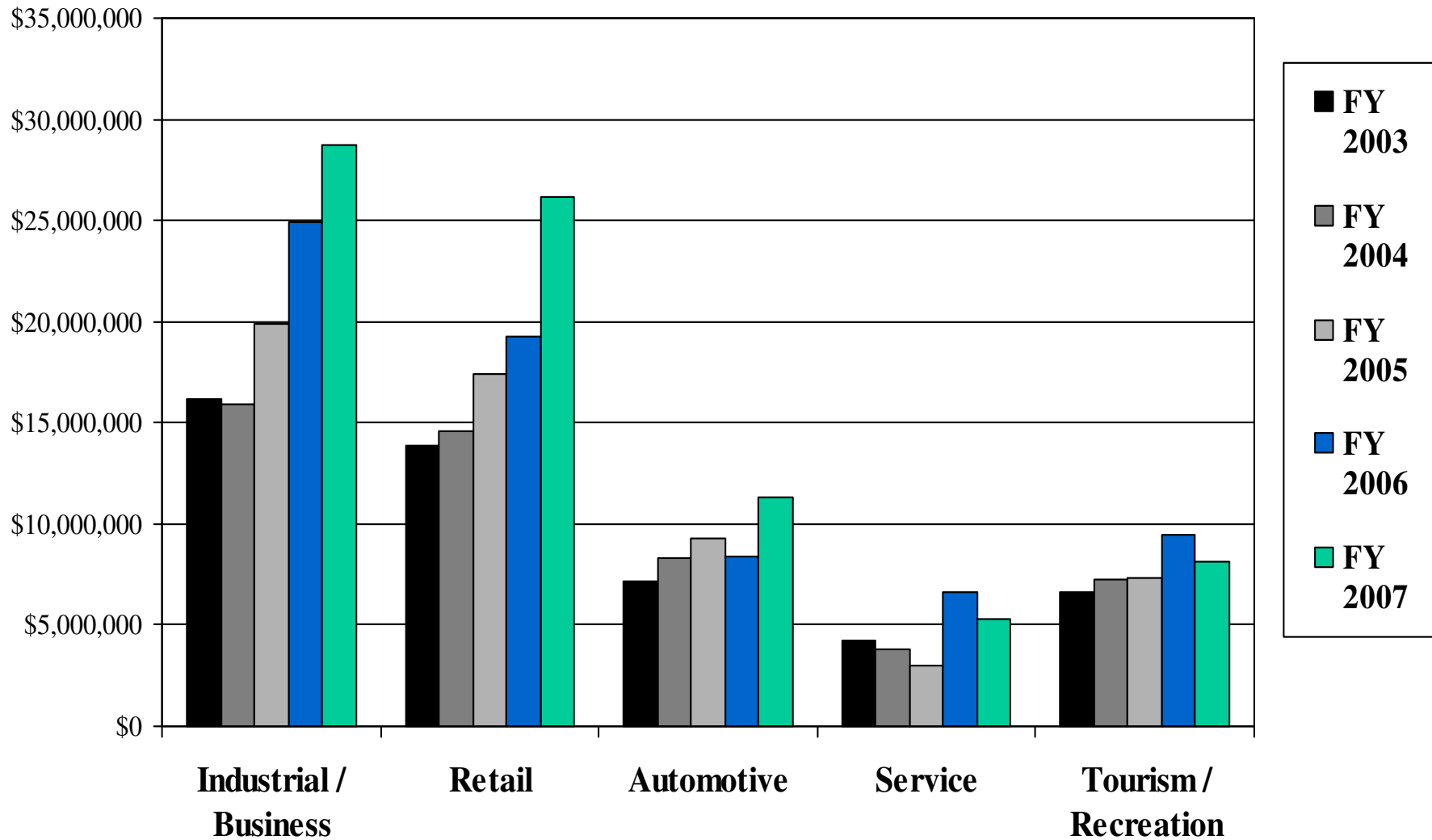


Taxable Sales -Eating and Drinking

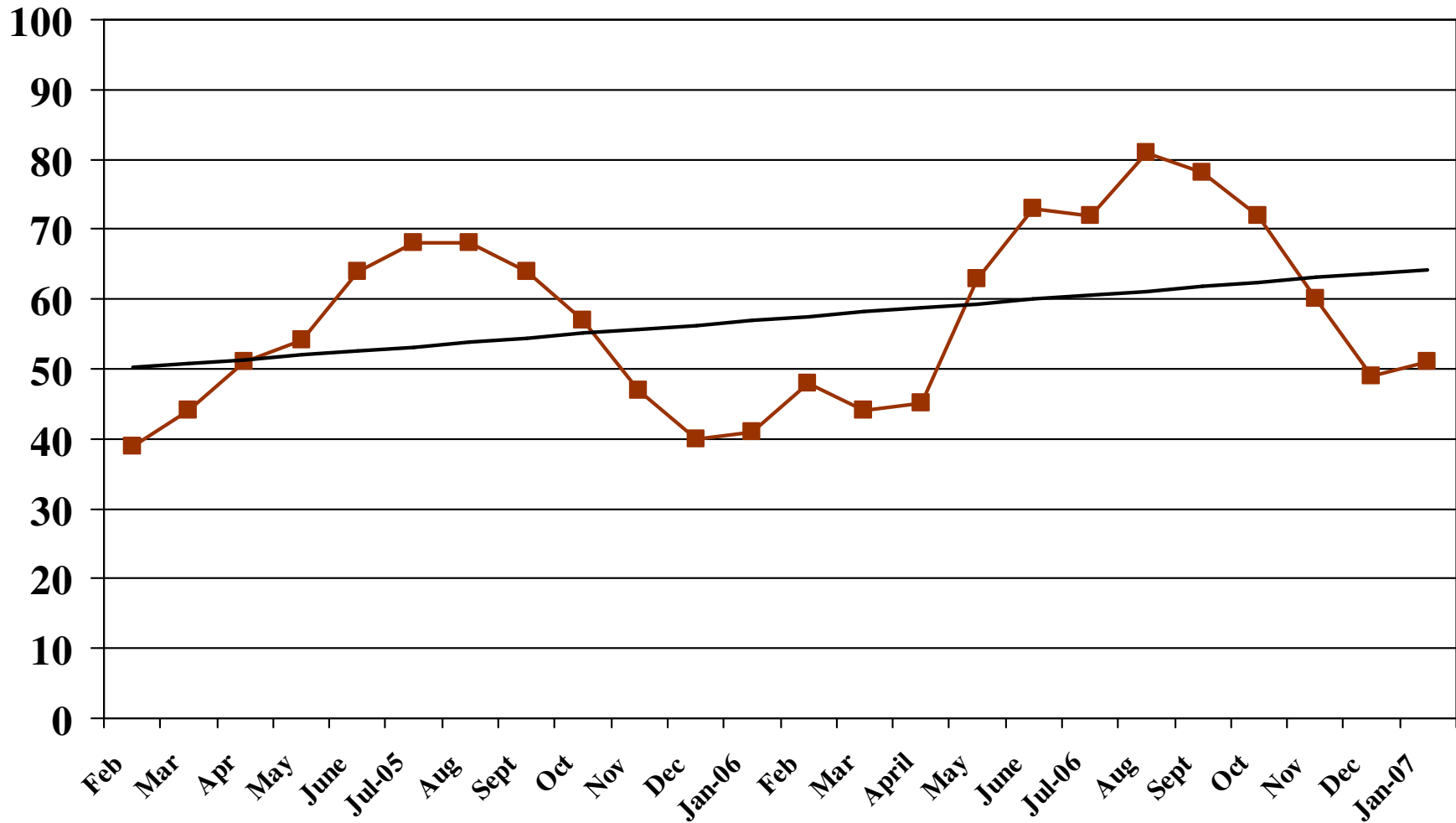
YTD – 5% of Total



Taxable Sales Comparison January

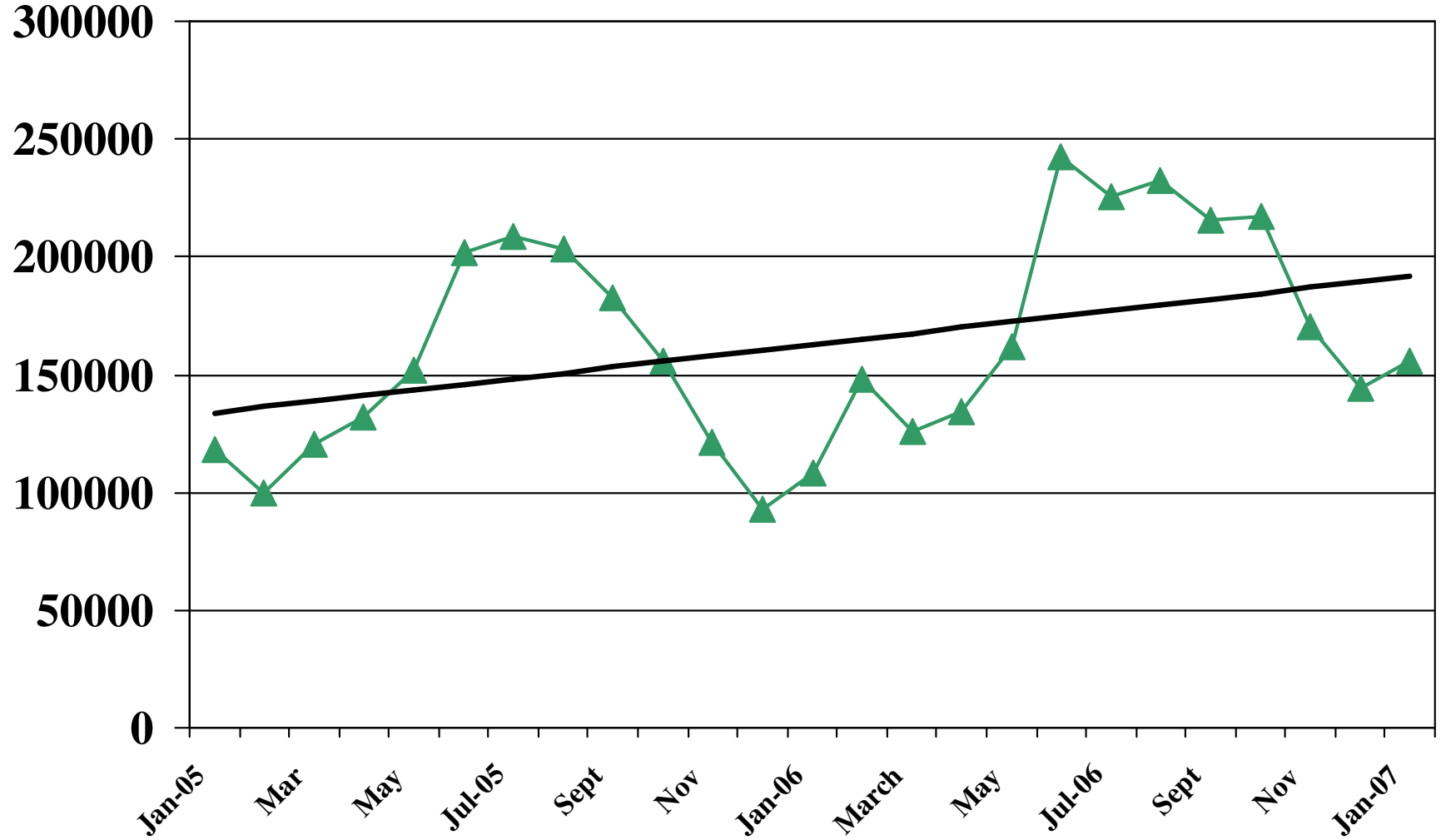


Percent Occupancy for those Reporting*

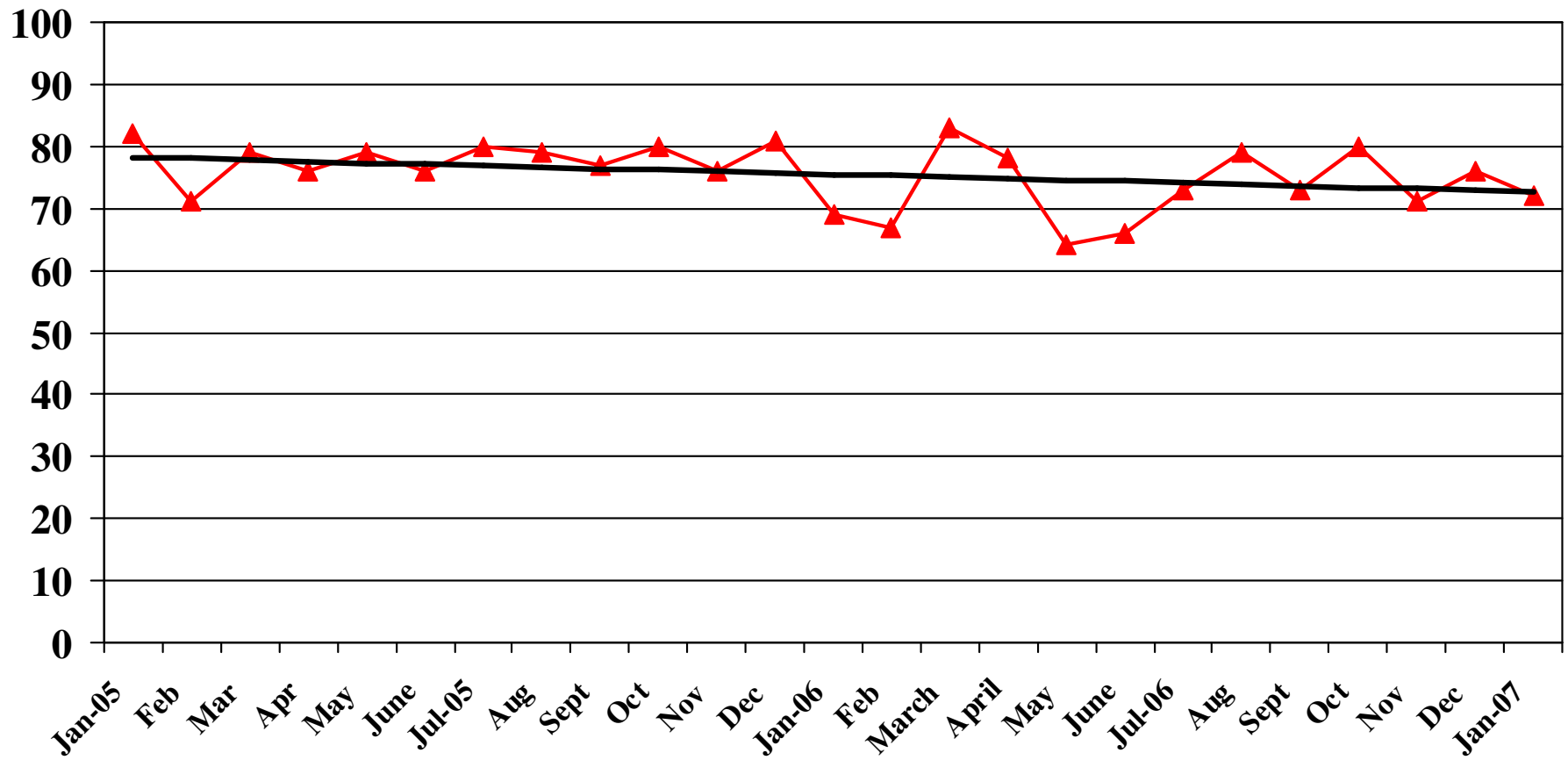


* Does not include rooms rented as part of a Casino Express package.

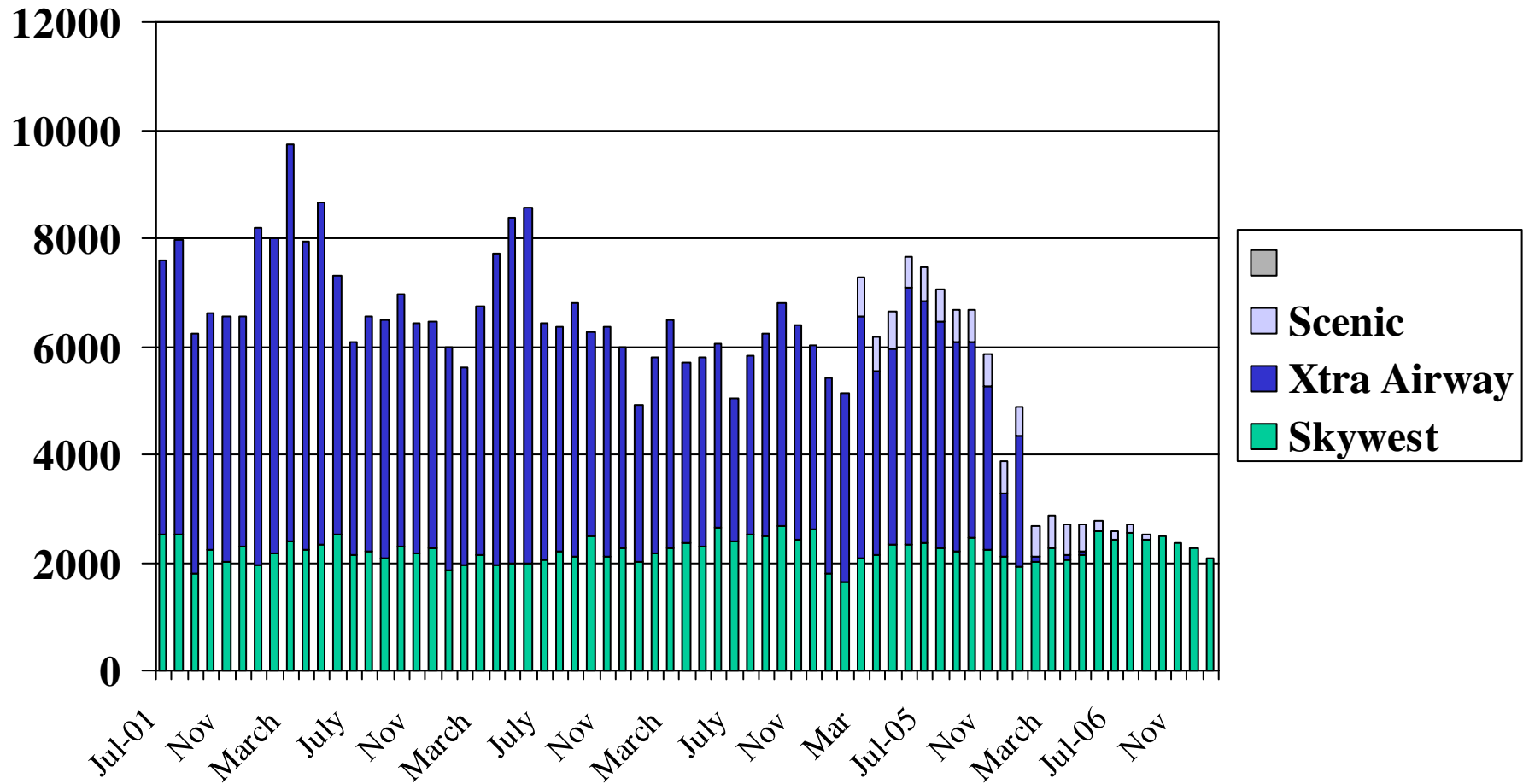
Room Taxes Received



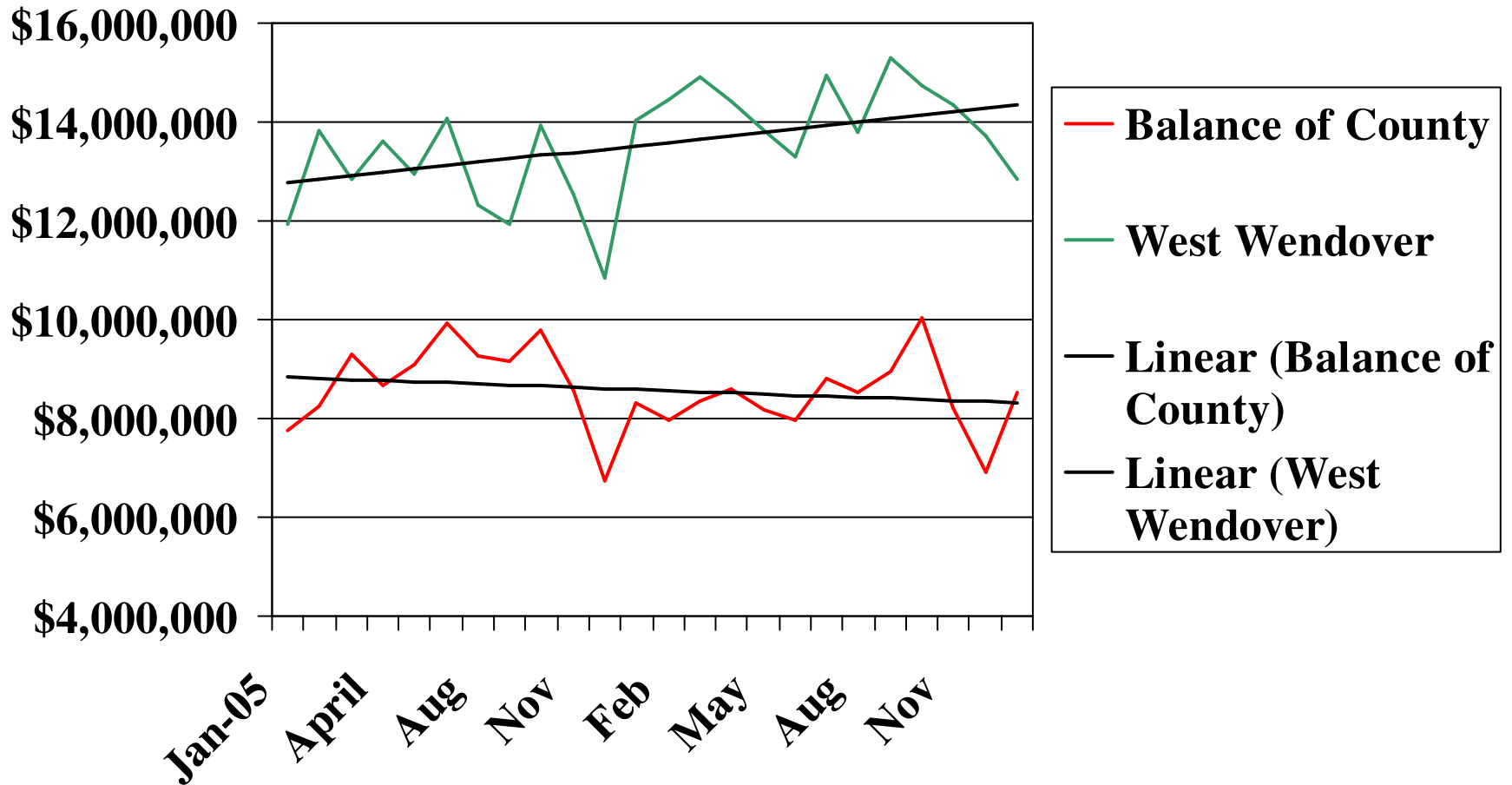
Percentage of Total Rooms Reported



Elko Regional Airport Total Enplanements



Gaming Win Revenues



Motor Vehicle Privilege Tax (Government Services Tax)

